

Air Quality and Health Impacts of the Proposed EMBA Hunutlu Coal Power Project

Lauri Myllyvirta, lead analyst

Summary

The Iskenderun Bay area on Turkey's Mediterranean coast is a major target for coal power expansion, with three operating coal power plants and four new projects (Global Energy Monitor 2020). Out of these, the one closest to realization is the EMBA Hunutlu project, a planned 2 x 660MW coal power plant in Yumurtalik, district of Adana in Turkey. The project is a joint venture between China's Shanghai Electric Power (SEP, 50.01%), Avic-International Project Engineering Company (2.99%), and two local Turkish investors (47%).

This briefing presents results from detailed air quality simulations and health impact assessment for the project and the existing coal-fired plants in the area, following the methodology of the study "The Real Costs of Coal in Mugla" (CAN Europe [2019](#)).

The air pollutant emissions from the EMBA Hunutlu project increase air pollution exposure across the entire Iskenderun Bay region, including in the city of Adana with a population of two million. Combined with the operating coal-fired power plants, the emissions would put approximately 100,000 people in the Iskenderun Bay area at risk of air pollution concentrations exceeding the World Health Organization guidelines, and directly expose

3,000 people to exceedances of the guidelines, even without considering other sources of air pollution in the region.

The currently operating plants are responsible for an estimated 200 deaths per year (95% confidence interval: 120-250). If all plants are operated until the end of their remaining operating life, assumed to be 40 years, this would mean approximately 5,400 future air-pollution related deaths from the existing plants. The addition of the EMBA Hunutlu plant would add a projected 2,000 cumulative deaths, assuming an operating life of 40 years, bringing the future total to an estimated 7,400 deaths (95% confidence interval: 4,800 - 10,100). Other projected health impacts from the studied plants include 15.8 million sickness days, including 1.9 million lost working days, 240,000 days of asthmatic and bronchitic symptoms in children, 27,000 cases of bronchitis in children, 4,500 new cases of chronic bronchitis in adults, 10,000 hospital admissions and 3,300 low birth weight births.

The project would also increase mercury deposition into cropland and fisheries, increasing mercury exposure for people consuming food produced in the region. Mercury emissions from the existing plants and the EMBA Hunutlu project are projected to cause potentially dangerous levels of mercury deposition in an area with approximately 580,000 inhabitants in the bay area.

Emissions

Assessment of the health impacts of the project requires data on air pollutant emissions and stack and flue gas properties. For the EMBA Hunutlu project, this data was available from the EIA of the project. Annual emissions were calculated assuming 85% average utilization, as per the EIA. The pollutant concentrations in the plant's flue gas are 2-3 as high as allowed in China, where emissions limits of 35, 50 and 10mg/Nm³ apply to SO₂, NO_x and dust emissions from new power plants (MEE 2015; see Table 1 for comparison).

For the existing coal-fired plants, emission information was compiled from publicly available sources, including the Diler Holding company website for Atlas TES₁, a company presentation for Tufanbeyli Enerjisa₂ and marketing materials from companies involved in

¹ http://www.dilerhld.com/grup.asp?anagrup_no=4

² <http://www.tki.gov.tr/depo/%C5%9E%C3%BCkr%C3%BC%20%C5%9Ei%C5%9Fman.pdf>

engineering and retrofitting the Sugözü Isken plants. Flue gas flow rates were estimated based on plant efficiency, reported annual power generation and coal calorific value. For Tufanbeyli, information on calorific value of lignite was available from a company presentation; the hard coal plants were assumed to fire 6000 kcal/kg bituminous coal. A specific flue gas volume of 350Nm³/GJ was assumed for the hard coal plants.

Since information on mercury emissions was completely omitted in the Hunutlu EIA and was not available for the other plants either, these emissions were estimated using the UNEP Mercury Toolkit (UNEP 2017). For hard coal plants, the average of the mercury contents for Colombian and South African bituminous coal was used; for Tufanbeyli the default mercury content for Turkish lignite was assumed. Default mercury capture rates for plants equipped with SO₂ scrubbers and particle controls were used.

Table 1 *Flue gas concentrations of air pollutants and flue gas volume flow (mg/Nm³).*

Plant	SO ₂	NO _x	Dust	Flue gas volume, Nm ³ /h
EMBA Hunutlu	135.6	123	21	4601770
Sugözü Isken TPP	400	200	30	4012105
Tufanbeyli Enerjisa	200	200	30	1696335
Atlas TES	200	200	10	3600000

Table 2 Emission mass rates and plant utilization.

³ <https://www.modernpowersystems.com/features/featurebringing-german-ipp-experience-to-turkey/>

<https://www.vgb.org/vgbmultimedia/PT201703TOPELL-p-11796.pdf>

<http://www.alayont.com/14/15/40/referanslarimiz/taahhut-projeler/isken-sugozu-termik-santrali-denox-tesisleri/>

Plant	SO ₂	NO _x	Dust	Utilization
EMBA Hunutlu	624	567	97	85.0%
Sugözü İskele TPP	1605	802	120	87.0%
Tufanbeyli Enerjisa	339	339	51	85.6%
Atlas TES	720	720	36	80.9%

Table 3 *Emission source characteristics.*

Source	Latitude	Longitude	stack height, m	exit temperature, K	diameter	exit velocity, m/s	MW
EMBA Hunutlu	36.816	35.855	180	328	2 x 7m	20	1320
Sugözü İskele	36.816	35.855	180	328	2 x 7m	20	1320
Tufanbeyli Enerjisa	38.186	36.270	158	318	80m	5.0	450
Atlas TES	36.691	36.209	210	334	9.8m	16.7	1200

Table 4 *Mercury emissions.*

	EMBA Hunutlu	Sugözü İskele	Tufanbeyli Enerjisa	Atlas TES	unit
coal consumption	2.87	3.48	6.53	2.90	Mt/year
coal mercury content	0.175	0.175	0.11	0.175	ppm
capture efficiency	65%	65%	20%	65%	
emissions	175.5	213.0	574	178	kg/year

Air quality modeling results

The air quality impacts of emissions from the plants were modeled using the CALPUFF dispersion model, which uses detailed hourly data on wind and other atmospheric conditions to track the transport, chemical transformation and deposition of pollutants, and is widely used to assess the short and long range impacts of emissions from industrial point sources and area sources. The model predicts the increases in hourly, daily and annual pollutant concentrations caused by emissions from the studied source. A full-year simulation using the emissions input data given above.

Emissions from the power plant would elevate the concentrations of health-harming pollutants across the entire Iskenderun Bay region, over an area with 7.5 million inhabitants. There would also be a transboundary impact on Cyprus, some 300km away from the power plant. Figures 1-3 show how the mountains around the bay trap pollution, increasing the impact on the densely populated coastal areas.

Even without considering other emissions sources in the region, the four power plants are estimated to cause exceedances of the World Health Organization air quality guidelines for SO₂ and NO₂: the guideline for 24-hour average SO₂ concentration (20µg/m³) is exceeded in areas around the Hunutlu and Sugözü plants and around the Atlas TES plant (Figure 1). The guideline for 1-hour NO₂ concentration (200µg/m³) is exceeded in an area near the Atlas TES plant (Figure 2). In total, the plants expose approximately 3,000 people to exceedances of the WHO guidelines. The highest predicted 24-hour average PM_{2.5} concentrations exceed 10µg/m³, or 40% of the WHO guideline level, in an area with 100,000 people (Figure 3). Considering the background pollution concentrations from all other sources, it is very likely that the plants contribute to exceedances of the WHO guideline for PM_{2.5} as well.

Out of the modeled mercury emissions of 1140kg/year from the four power plants, approximately 370kg would be deposited into land and freshwater ecosystems, and 30kg into the Iskenderun Bay, with potential impacts on mercury concentrations in fish and seafood caught in the region. Mercury deposition rates as low as 125mg/ha/year can lead to accumulation of unsafe levels of mercury in fish (Swain et al 1992). The plants are estimated to cause mercury deposition above 125mg/ha/yr in an area of 2,500km² to the north and northeast of the plants, with a population of approximately 580,000 people

(Figure 4). While actual mercury uptake and biomagnification depends very strongly on local chemistry, hydrology and biology, the predicted mercury deposition rates are a cause for serious concern.

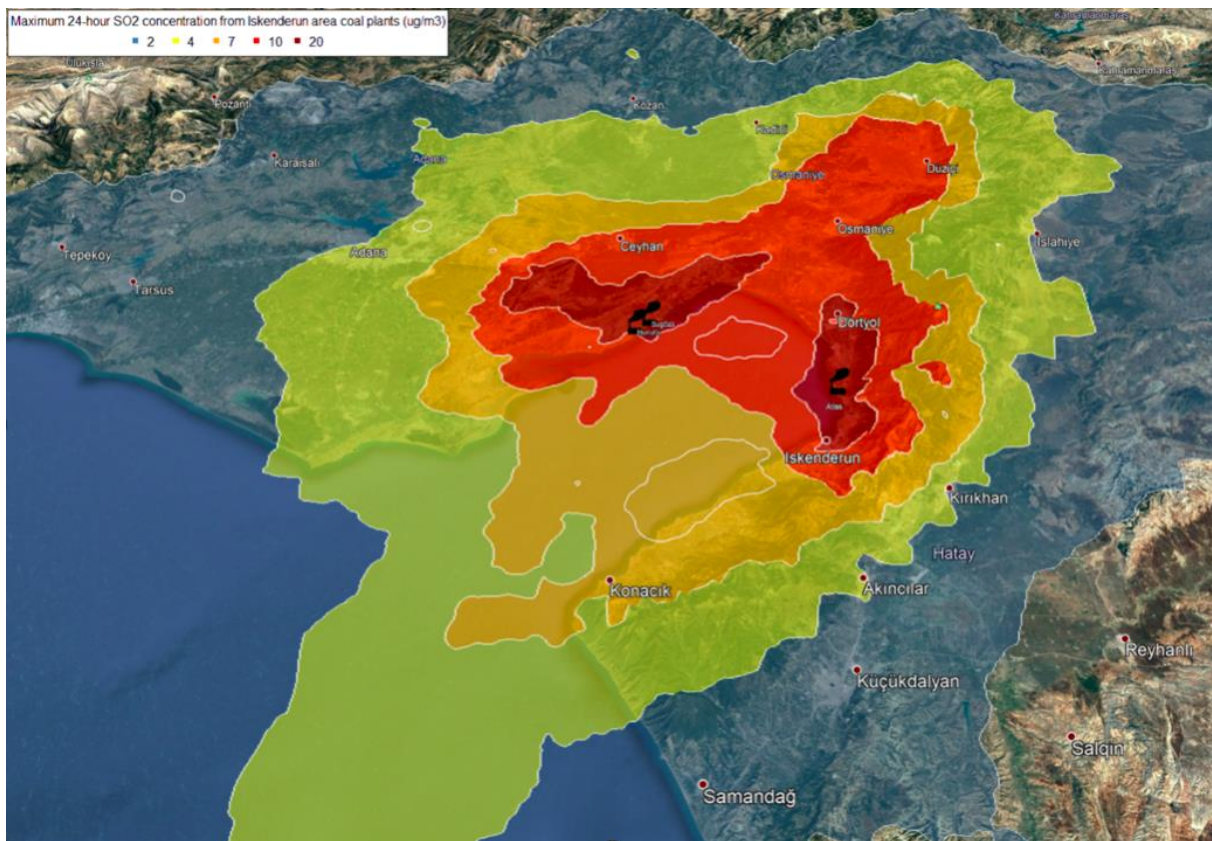


Figure 1 *Projected maximum 24-hour SO₂ concentrations from the plants.*

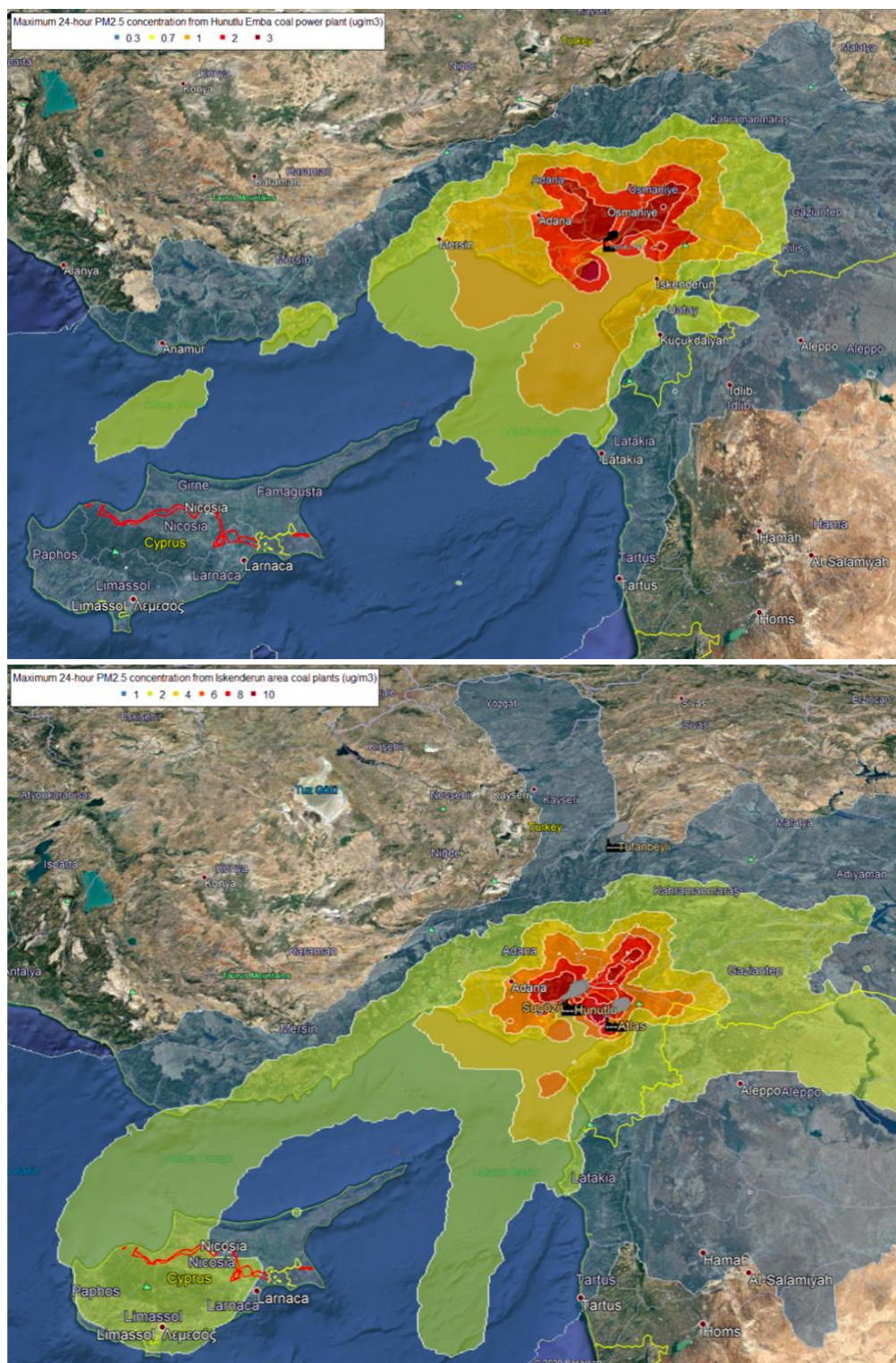


Figure 2 Projected maximum 24-hour PM_{2.5} concentrations from the plants.

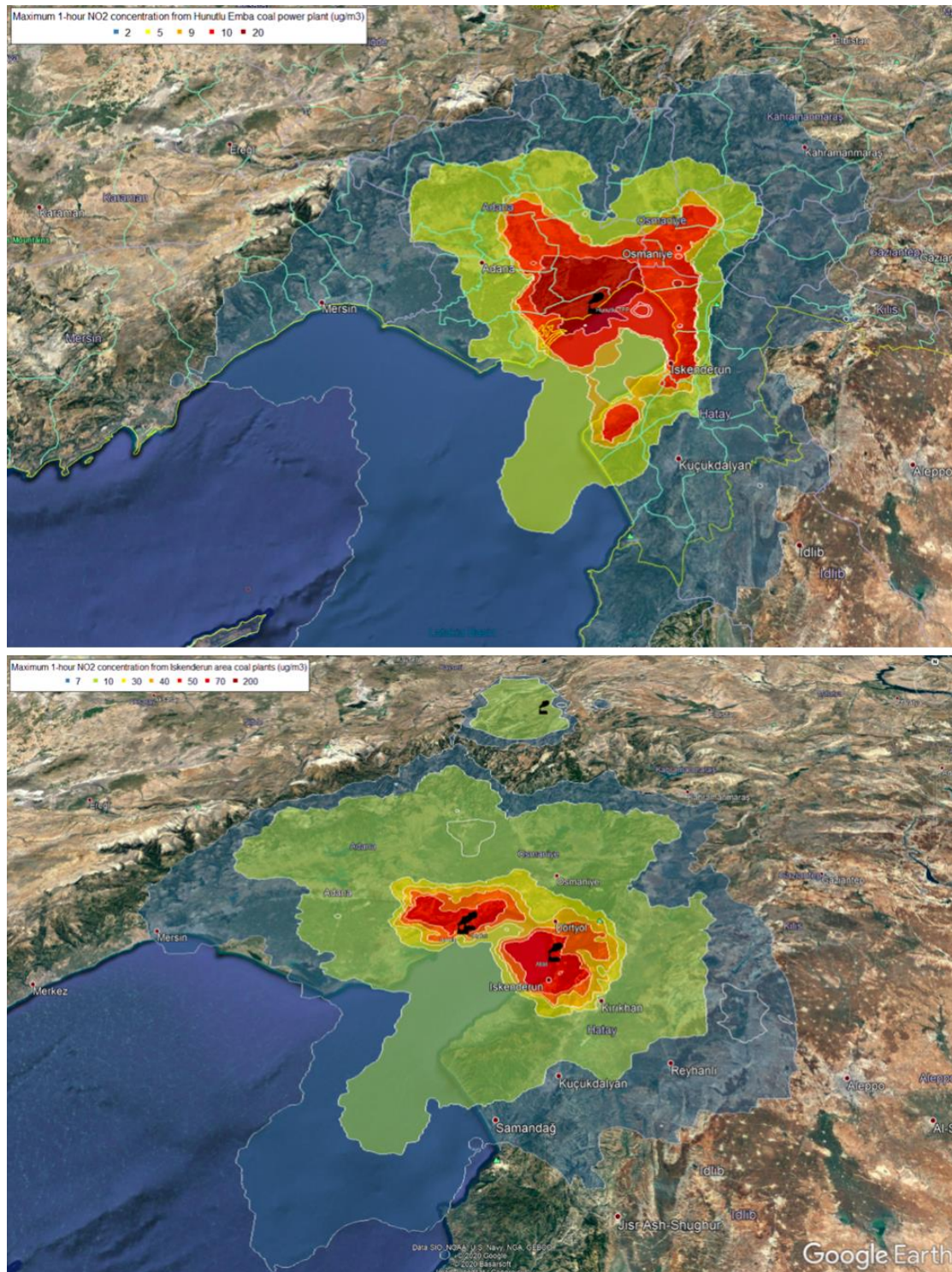


Figure 3 Projected maximum 1-hour NO₂ concentrations from the plants.

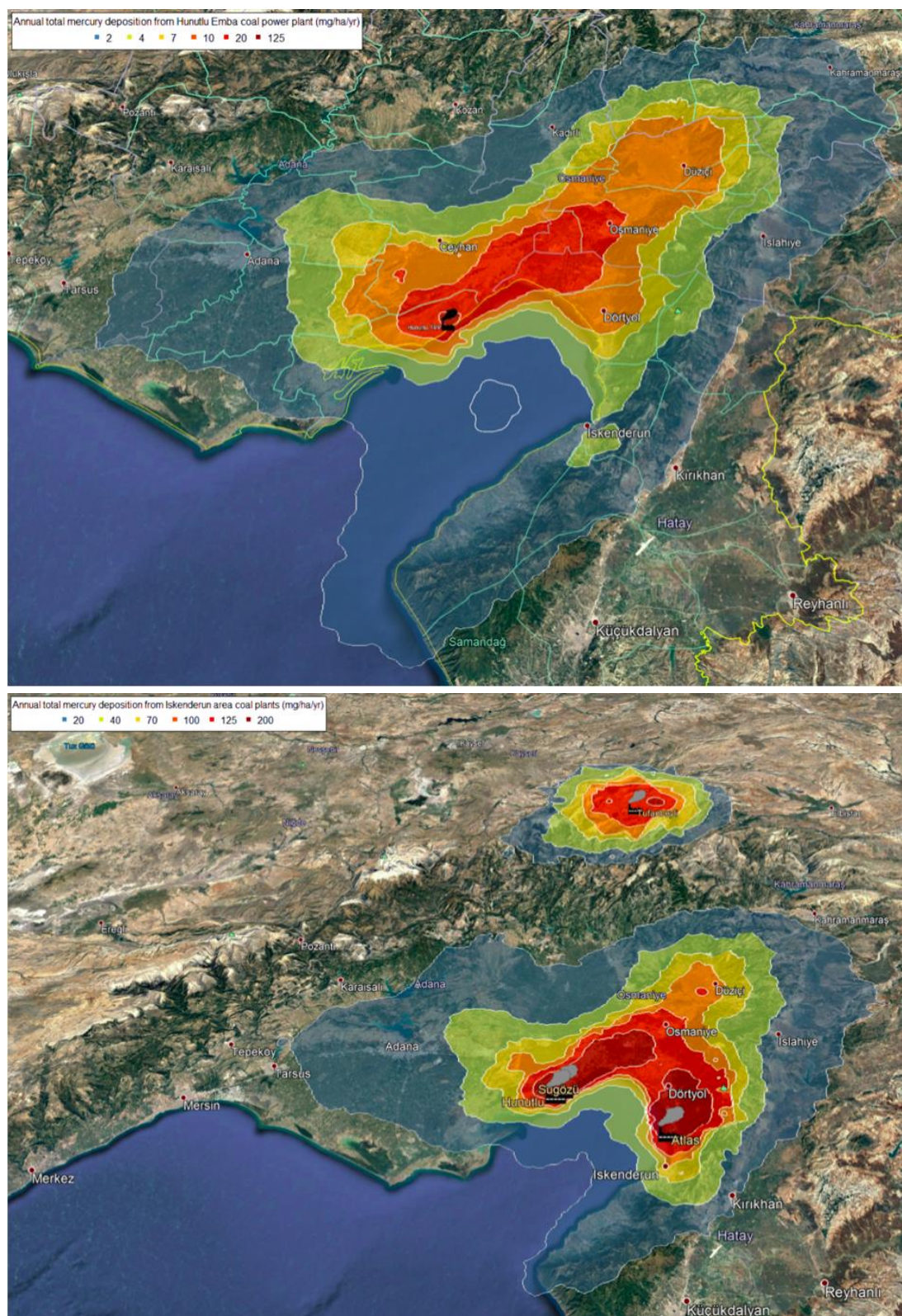


Figure 4 Projected annual mercury deposition from the plants.

Health impacts

The health impacts of the projected increases in air pollutant levels were evaluated following WHO (2013) recommendations for health impact assessment and national-level health data (IHME 2018) and high-resolution population data (CIESIN 2017) for Turkey. The implementation of the health impact assessment follows Huescher, Gierens & Myllyvirta (2017). The increase in low birth weight births was assessed based on Dadvand et al (2016).

The emissions from the EMBA Hunutlu power plant would be responsible for a projected 50 deaths per year (95% confidence interval: 30-70). Over an operating life of 40 years, this would mean approximately 2,000 air-pollution related deaths. The four plants, if operated to a lifetime of 40 years before retirement, would be responsible for a projected future toll of 7,400 deaths.

Table 5 *Projected cumulative lifetime impacts of the EMBA Hunutlu project.*

Effect	Pollutant	Value	Confidence interval
asthmatic and bronchitic symptoms in children, days	PM10	68,200	(14,800 - 123,000)
bronchitis in children, cases	PM10	7,570	(-1,990 - 17,100)
chronic bronchitis in adults, cases	PM10	1,260	(447 - 1,970)
hospital admissions	NO2	690	(442 - 936)
hospital admissions	PM2.5	2,130	(87 - 4,170)
lost working days	PM2.5	507,000	(431,000 - 582,000)
low birth weight	PM2.5	920	(285 - 1,600)
premature deaths	NO2	139	(79 - 199)
premature deaths	PM2.5	1,970	(1,280 - 2,610)
premature deaths	Total	2,060	(1,330 - 2,800)
sickness days	PM2.5	4,380,000	(3,920,000 - 4,920,000)

Table 6 *Projected cumulative future impacts of the four Iskenderun area coal power plants.*

Effect	Pollutant	Value	Confidence interval
asthmatic and bronchitic symptoms in children	PM10	244,000	(52,800 - 439,000)
bronchitis in children	PM10	27,100	(-7,100 - 61,200)
chronic bronchitis in adults	PM10	4,540	(1,610 - 7,100)
hospital admissions	NO2	2,130	(1,360 - 2,890)
hospital admissions	PM2.5	7,690	(314 - 15,100)
lost working days	PM2.5	1,850,000	(1,570,000 - 2,120,000)
low birth weight	PM2.5	3,330	(1,030 - 5,780)
premature deaths	NO2	457	(261 - 657)
premature deaths	PM2.5	7,140	(4,650 - 9,460)
premature deaths	Total	7,440	(4,830 - 10,100)

sickness days	PM2.5	15,800,000	(14,200,000 - 17,800,000)
---------------	-------	------------	---------------------------

References

CAN Europe 2019: The Real Costs of Coal in Mugla.

<http://www.costsofcoal.caneurope.org/>

Center for International Earth Science Information Network (CIESIN), Columbia University, 2017. Gridded Population of the World, Version 4 (GPWv4): Population Density, Revision 10. Palisades, NY: NASA Socioeconomic Data and Applications Center (SEDAC). <https://doi.org/10.7927/H4DZ068D>.

Dadvand P et al. 2013: Maternal Exposure to Particulate Air Pollution and Term Birth Weight: A Multi-Country Evaluation of Effect and Heterogeneity. Environmental Health Perspectives. <http://ehp.niehs.nih.gov/pdf-files/2013/Feb/ehp.1205575.pdf>

Global Energy Monitor 2020: Global Coal Plant Tracker.

<https://globalenergymonitor.org/coal/global-coal-plant-tracker/>

Huscher J, Myllyvirta L and Gierens R 2017: Modellbasiertes Health Impact Assessment zu grenzüberschreitenden Auswirkungen von Luftschadstoffemissionen europäischer Kohlekraftwerke. Umweltmedizin - Hygiene - Arbeitsmedizin Band 22, Nr. 2 (2017) <https://www.ecomed-umweltmedizin.de/leseproben/umweltmedizin--hygiene--arbeitsmedizin-band-22-nr-2-2017-.pdf>

Institute for Health Metrics and Evaluation (IHME) 2018: Global Burden of Disease Study 2017 (GBD 2017) Results. Seattle, United States. <http://ghdx.healthdata.org/gbd-results-tool>.

Ministry of Ecology and Environment (MEE) 2015: Comprehensive implementation plan of the ultra-low emissions standard and energy saving retrofits of coal-fired power plants [全面实施燃煤电厂超低排放和节能改造工作方案]. Beijing, China.
<http://www.mee.gov.cn/gkml/hbb/bwj/201512/W020151215366215476108.pdf>

Swain EB, Engstrom DR, Brigham ME, Henning TA, Brezonki PL 1992: Increasing Rates of Atmospheric Mercury Deposition in Midcontinental North America. Science 257(5071):784-787. <https://doi.org/10.1126/science.257.5071.784>

UNEP, 2017. Toolkit for Identification and Quantification of Mercury Releases. UN Environment Chemicals Branch, Geneva, Switzerland.

World Health Organization (WHO) 2013: Health risks of air pollution in Europe-HRAPIE project.
http://www.euro.who.int/__data/assets/pdf_file/0006/238956/Health_risks_air_pollution_HRAPIE_project.pdf?ua=1